

Smart-Healthy-Age Friendly Environments (SHAFE)

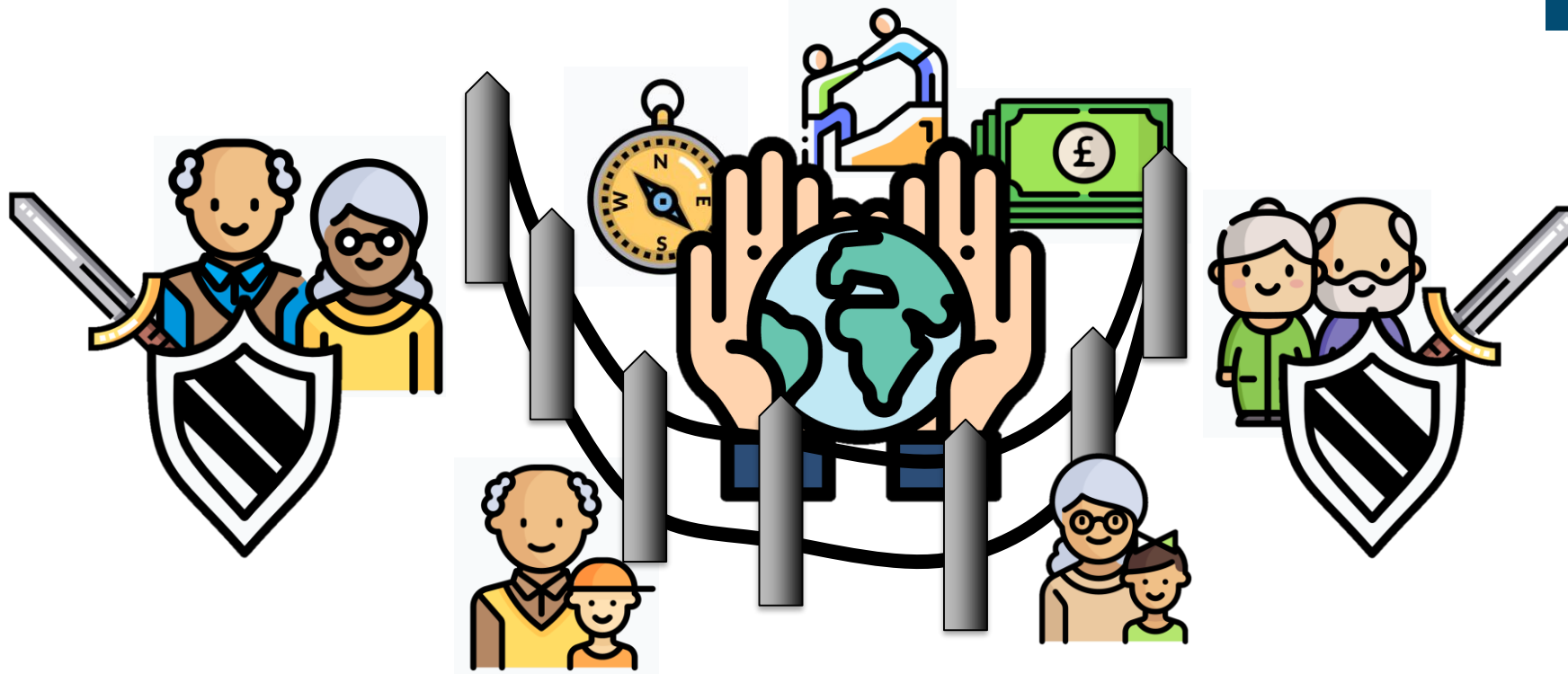


Dr John McGrory

Technological University Dublin, City Centre Campus, Dublin, Ireland.



Elder's are Curators of Society Core Value Norms



Work/Life

Experience:

- Something you gain after you needed it.
- It's earned.



Tolerance



Right/Wrong



Boom

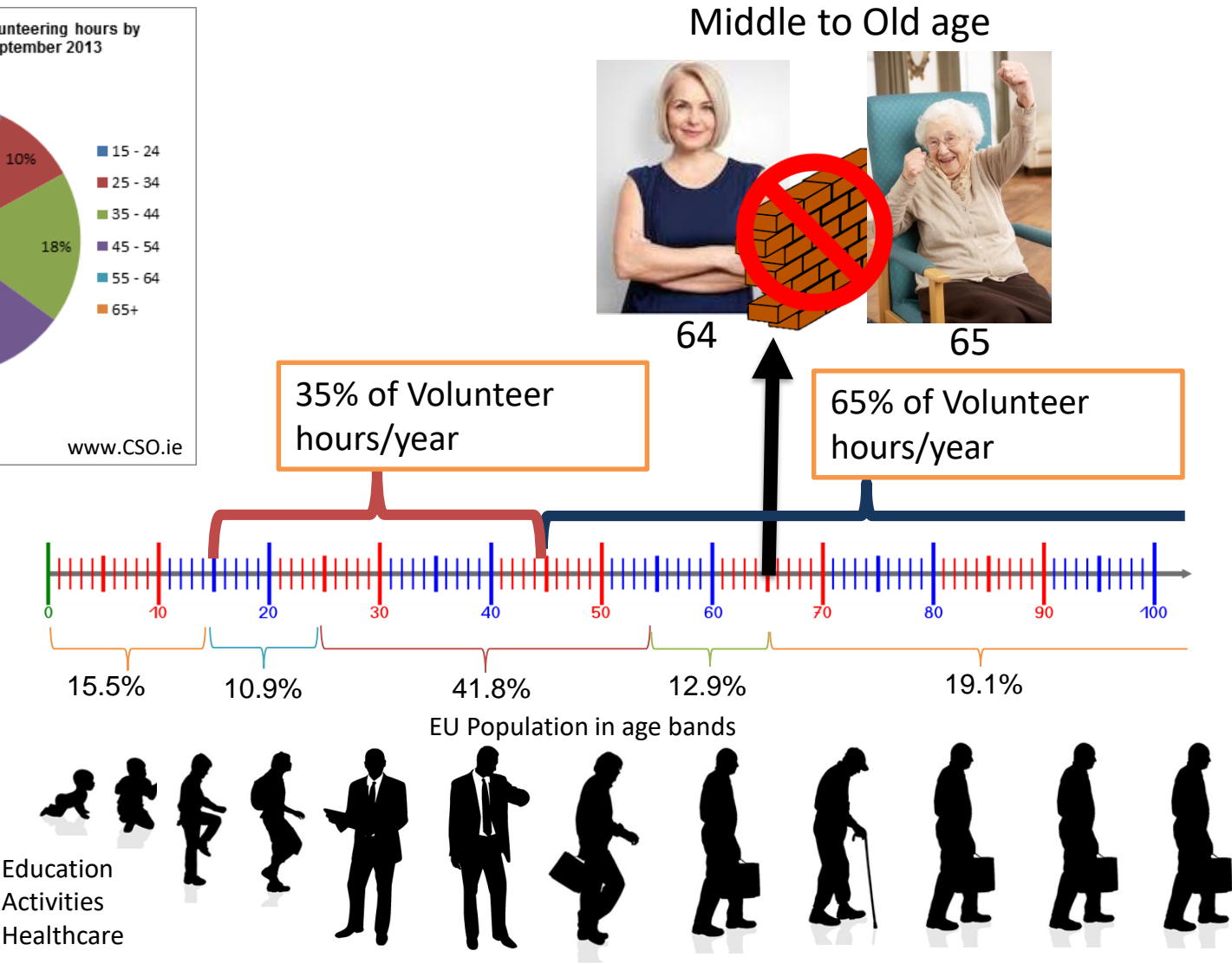
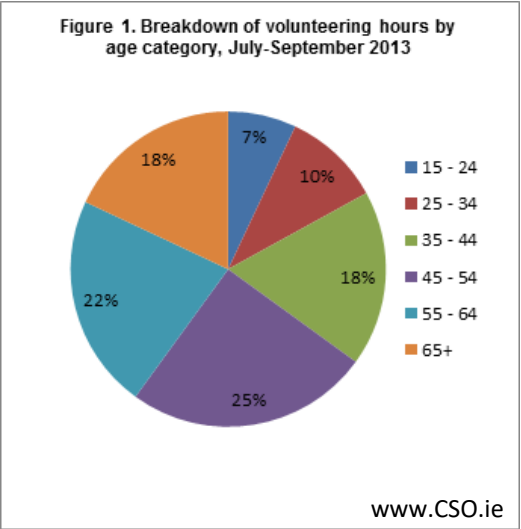


Bust



Boom

Volunteering to Support Society Values



Team formation and Outputs



Young Teams

Make decisions quicker but make a lot of mistakes.



Mature Teams

Make decision slower but make less mistakes.

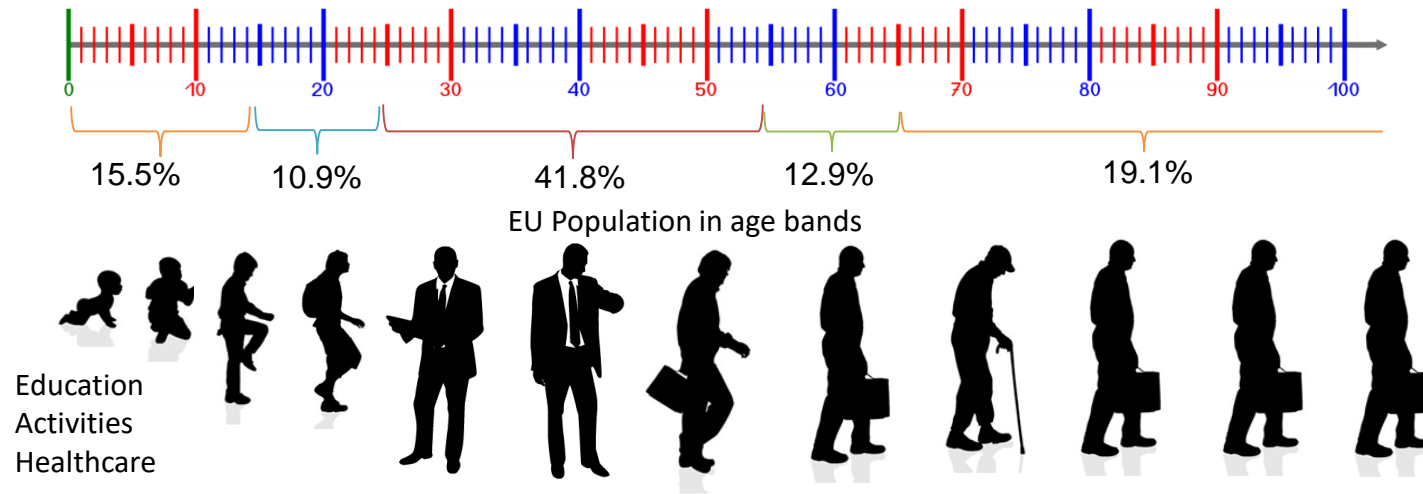


Cognitive diversity

- Less sick days.
- Increased industry knowledge.
- Experience & decision balance.
- Expertise.
- Social awareness and group support.
- Mentoring skills
- Maturity to decision making.

Synthetic Thinking

- Abstract thought.
- Logical thinking,
- Reasoning - thinking that is coherent & logical



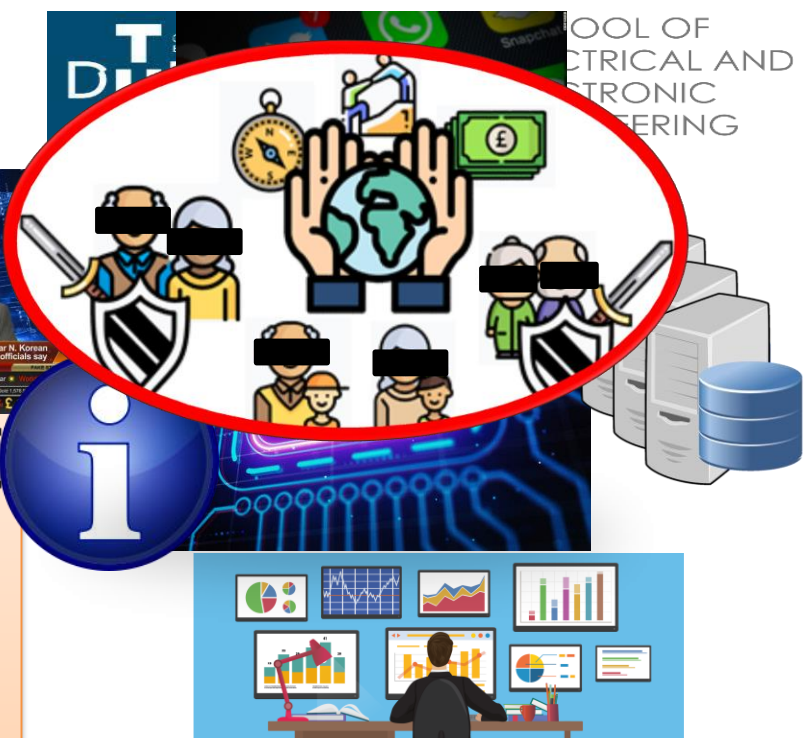
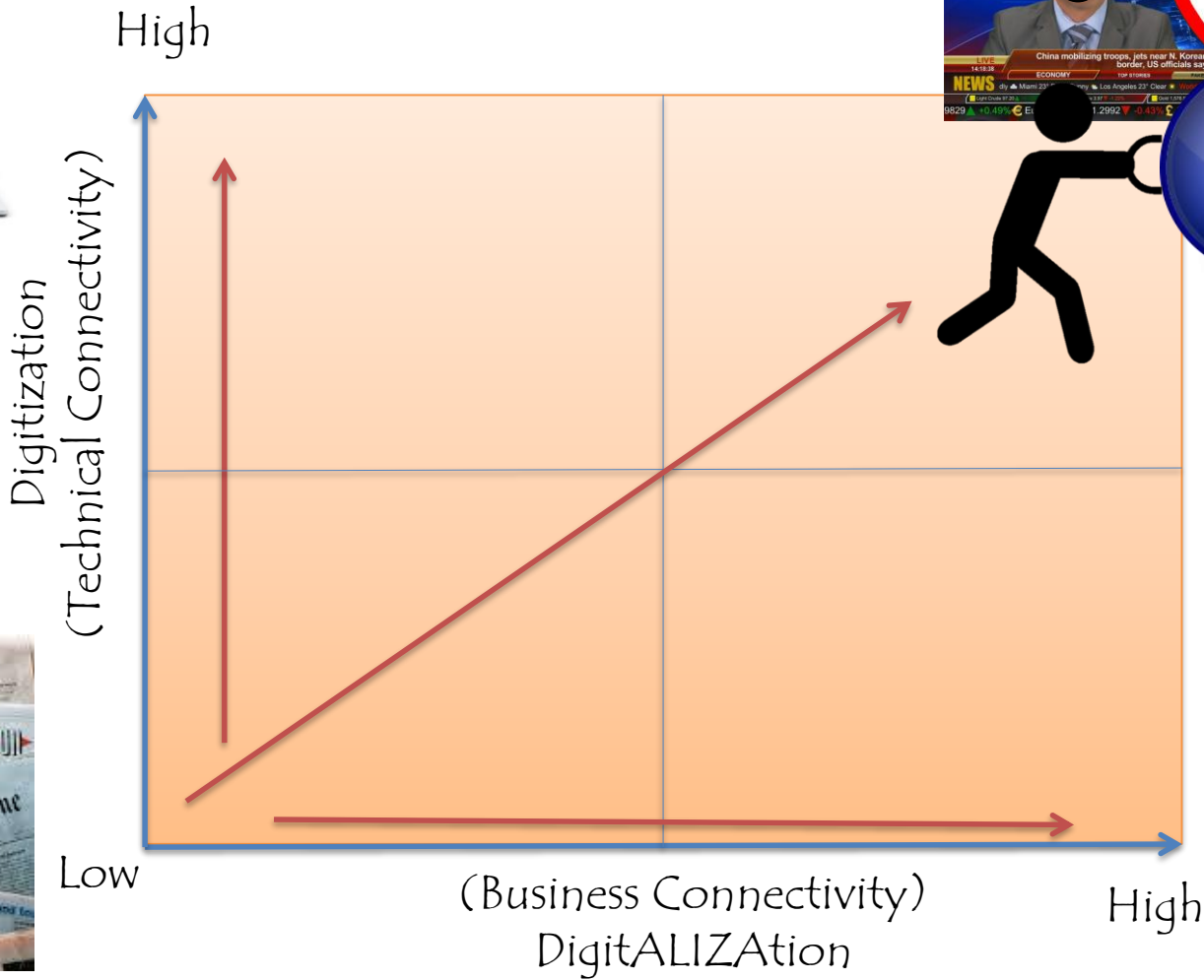
Digitization v's Digitalization



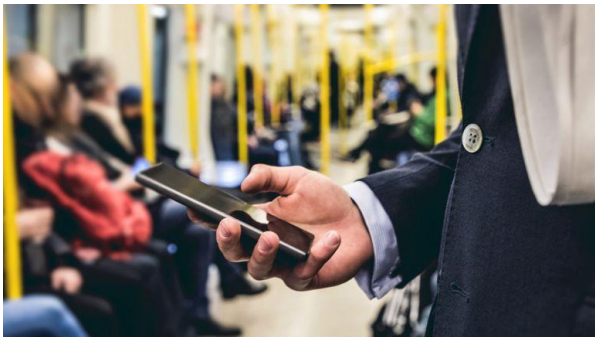
Stored Electronically



Printed Paper



Software Engine
Similar to 1000s of proactive workers



Quickly accessing to news

Privacy and Education



Behind my walls I should be safe

Things I disclose by my
gesture/behaviour/manner/
reaction



Things I disclose by my intention
typing/writing/searching/shopping

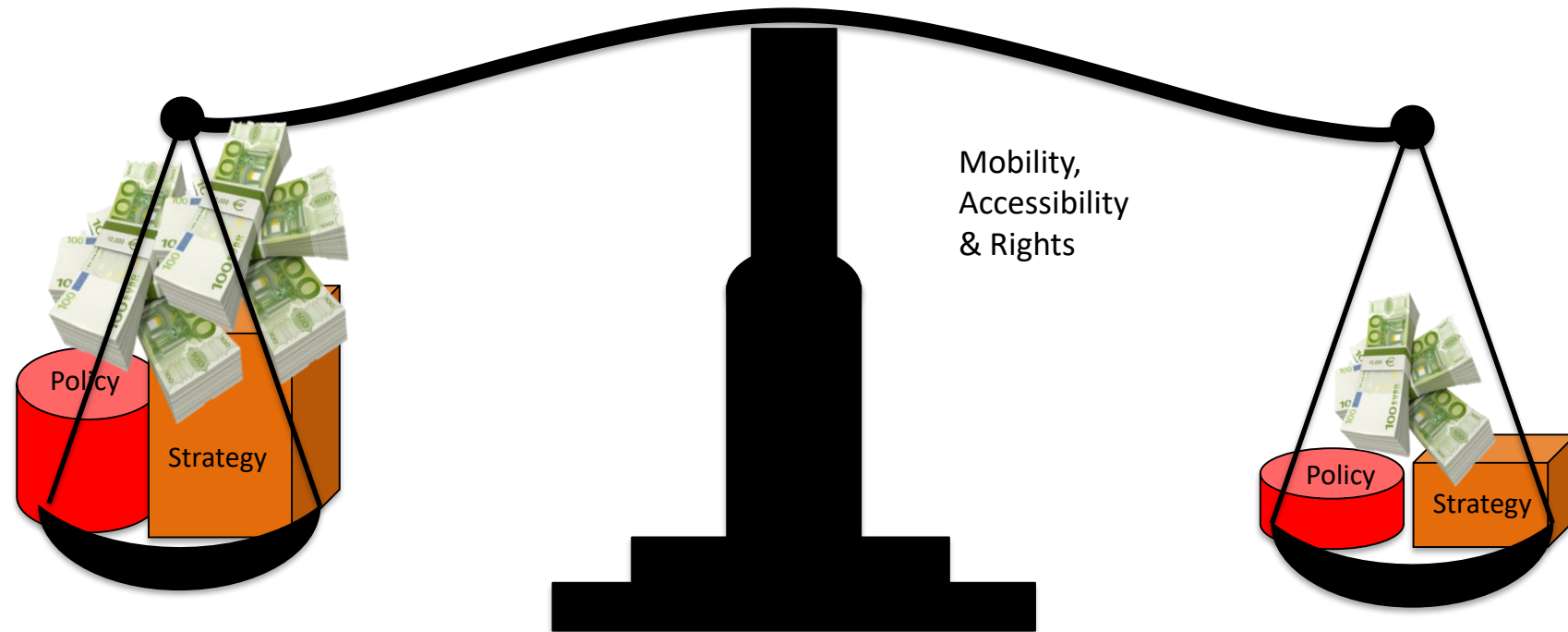


Loyalty cards gave you
something for your data?



Digitization v's Digitalization

Balance of Policy & Strategy Instruments



Mobility,
Accessibility
& Rights

Specifically Elder Focused

Big Data Education

Ownership

Privacy

Control

Catch Phrase

Jargon

Security

Descriptive

Data

Personalization

On the Cloud

Analysis

Prescriptive

Warehouse

Predictive

Storage

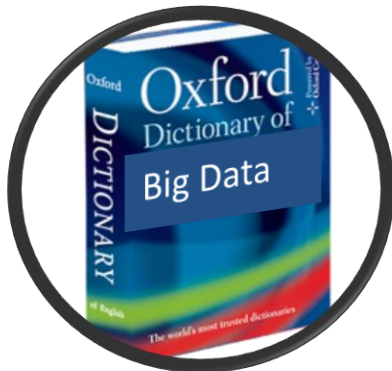
Firewalls

Reuse

Best in Class

Diagnostics

Analysis



Debate

What can be done?

- Education
- Train
- Support a social network
- Mobilise
- Encourage



Like Nouns, Verbs and Adjectives but no context, simplified examples/comparisons.....

There are many Gaps & challenges, but there are also many Opportunities.

