



Craig White

20 01 2020

@agile_homes

www.agile.property

Agile Homes - Our offer

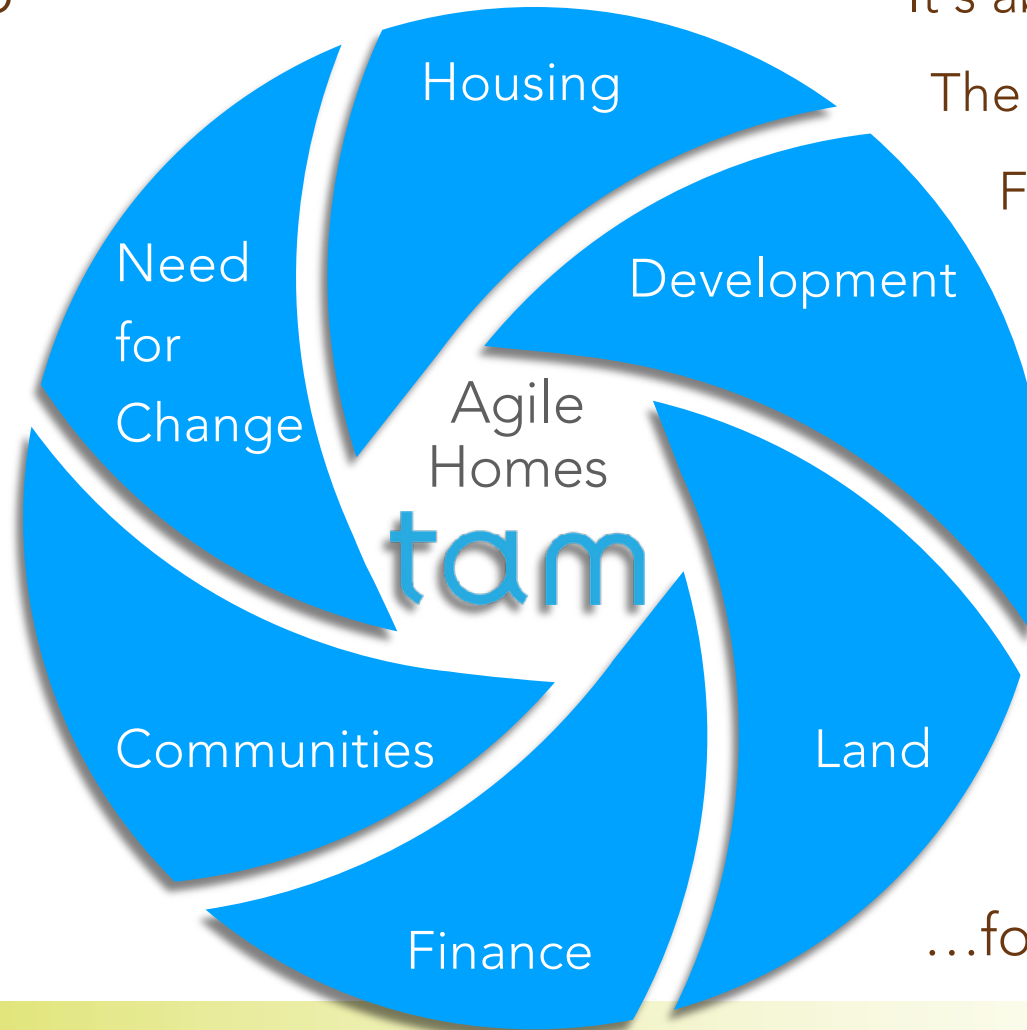
An **immediate, simple** and **cost effective** solution to help fix the **housing crisis**.

High quality, low carbon, affordable homes for those in housing need.

We know that **Housing is Health**.

A safe civil place to live with security of tenure reduces stress, anxiety and depression

Six Things...



It's about People not Product

The solutions to house them

Finding finance that flows

Using the right products

...for System Level Change

The Challenge

Sales - Postcode determines price

Hardware - Fixed cost

Land - Scarce



Business as usual

Targets costs

Builds cheap

Protects margins

Dislikes affordable

Can we change the model?

And not pay for land.

Yes!

Land Supply: **new, free** and **hidden** in plain sight

Ebenezer Howard's Garden City Movement was, and still is, a fashionable trend in urban planning. It proposed the idea of building new towns set in the countryside, which could allow people access to nature and the health benefits that green spaces provide. In Knowle West this was interpreted to mean good quality homes set in generous gardens.



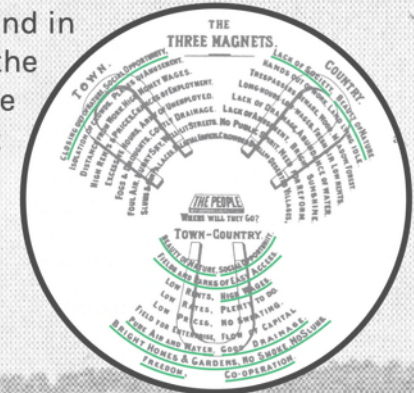
Knowle West:
5,000 semi-detached homes
Low Density Garden City
Homes Fit for Heroes
We built 4 million homes like this
In London at least 8 Becontree, St Helier, Downham;
Bellingham etc

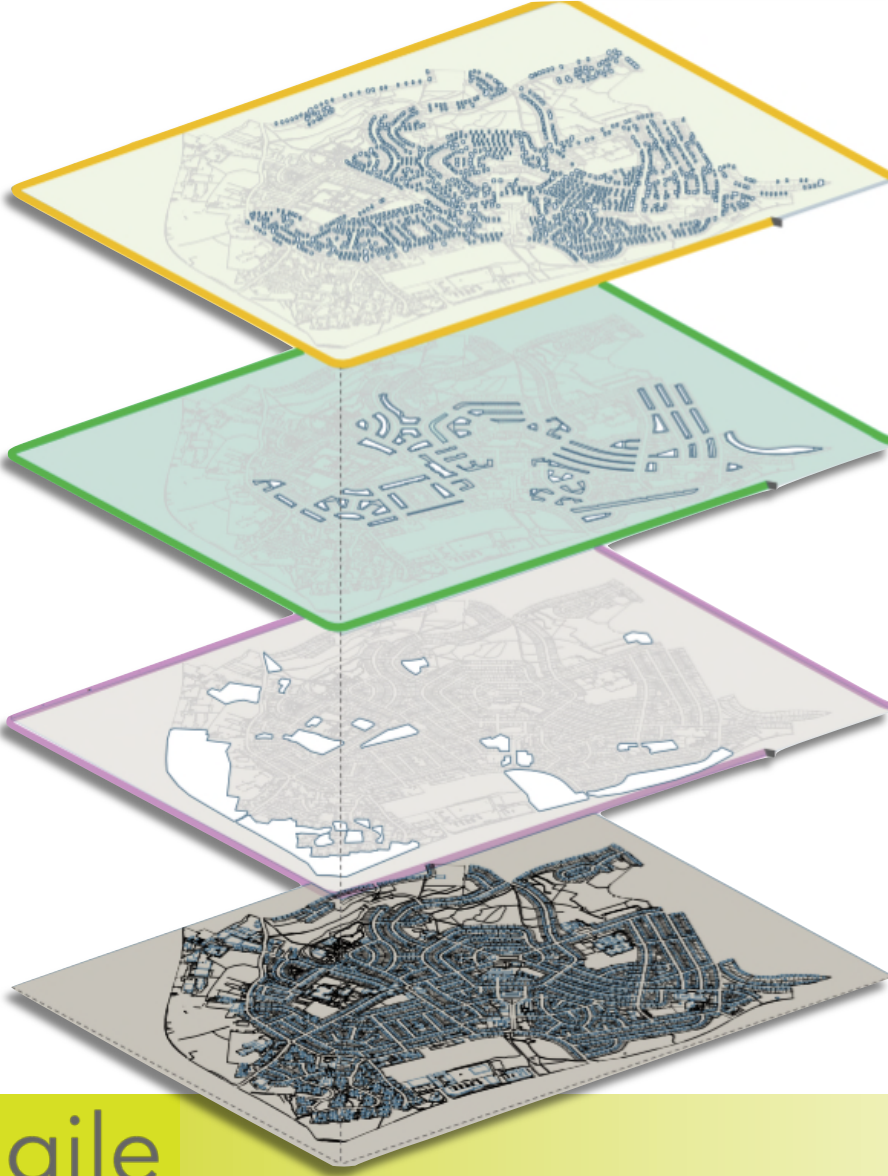
Land Supply: **new, free** and **hidden** in plain sight

We found:

54% lived in by 1 or 2 people over 55
44% overcrowded with babies on the way
16% of people are in Fuel Poverty
Empty nesters and new shoots.
Need 1 & 2 bed homes

Ebenezer Howard's Garden City Movement was, and still is, a fashionable trend in urban planning. It proposed the idea of building new towns set in the countryside, which could allow people access to nature and the health benefits that green spaces provide. In Knowle West this was interpreted to mean good quality homes set in generous gardens.





We mapped the whole estate
And found:

3,500 micro sites

In:


Gaps

Corners

Gardens

No Man's Land

Solving the Land Challenge

A photograph of a modern, single-story wooden cabin. The cabin is constructed from dark-stained vertical wooden planks. It features a large, floor-to-ceiling glass door with a dark frame, which is slightly ajar. To the right of the door, there is a wicker armchair on a wooden deck. The deck is made of light-colored wooden planks and has a few steps leading up to it. The cabin is set against a clear blue sky. In the background, there are green trees on the left and a brick house with a tiled roof on the right. The overall scene is bright and sunny, with shadows cast on the ground and the cabin's exterior.

So we built a 1 bed home
On a micro site
To the highest standards
Without planning permission
In 10 Weeks...

We might ask for forgiveness, but not permission

tam



No compromise...

Then we invited Mayor for a sleepover!

You're welcome to stay too!

A photograph of a modern, rectangular garden room or tiny house. The structure is clad in dark, vertical wooden planks. It features a large glass door with a dark frame, a smaller window, and a dark door. The building is situated on a wooden deck. A wicker chair is placed on the deck to the right of the glass door. The background shows a clear blue sky and some greenery. The text "Why no planning permission?" is overlaid in white on the lower left side of the image.

Why no planning permission?

It complies with both the **Caravan Act** and **Chattel Law**.

The Act has three tests:

Construction There should be two sections separately constructed with the final act of assembly joining them.

Mobility It is not necessary for a caravan to be towed, only that it can be moved by road without damage.

Size No larger than 20 x 6.8m with a floor to ceiling height less than 3.05m.

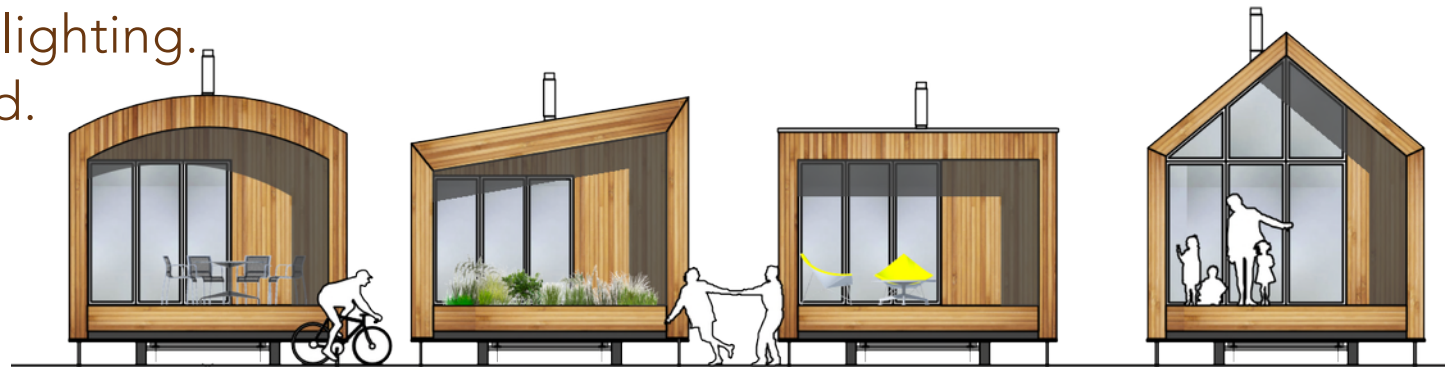
Chattel is a moveable asset that does not require planning approval.

Tam is not a caravan!
It's a house on a caravan chassis.
Nor is it a shipping container.

tam

It exceeds Building Regulations.
Low Carbon and Super Insulated.
Triple Glazed and all LED lighting.
Energy demand minimised.
Fuel Poverty Eradicated.
Lead time 12 weeks.

It's recoverable capital.



Available in 1 to 4 bedroom units as a shell or fully finished.

agile
HOMES

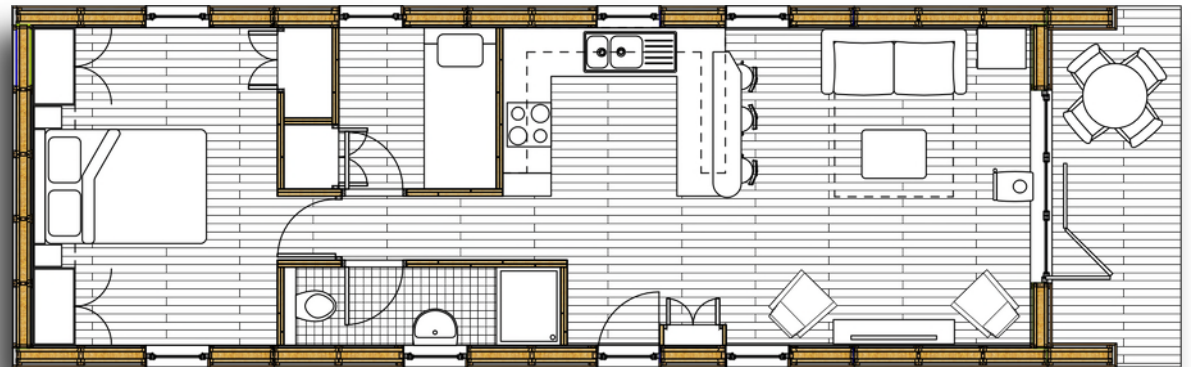
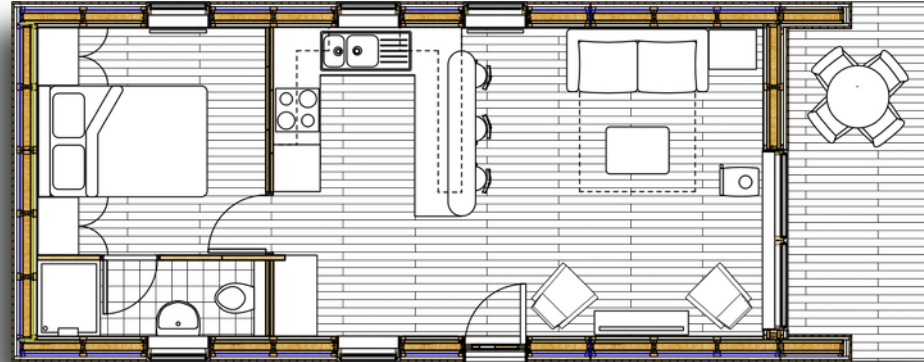
Solving the Land Challenge

1 bed Shell £64,990
1 bed finished £77,990

2 bed Shell £72,000
2 bed finished £85,990

Customisable

Ability to Lease Finance





Homes
England



agile
HOMES

We Can Make - funded and we will build up to 350 homes





agile
HOMES

UWE Intergenerational Living Cluster





